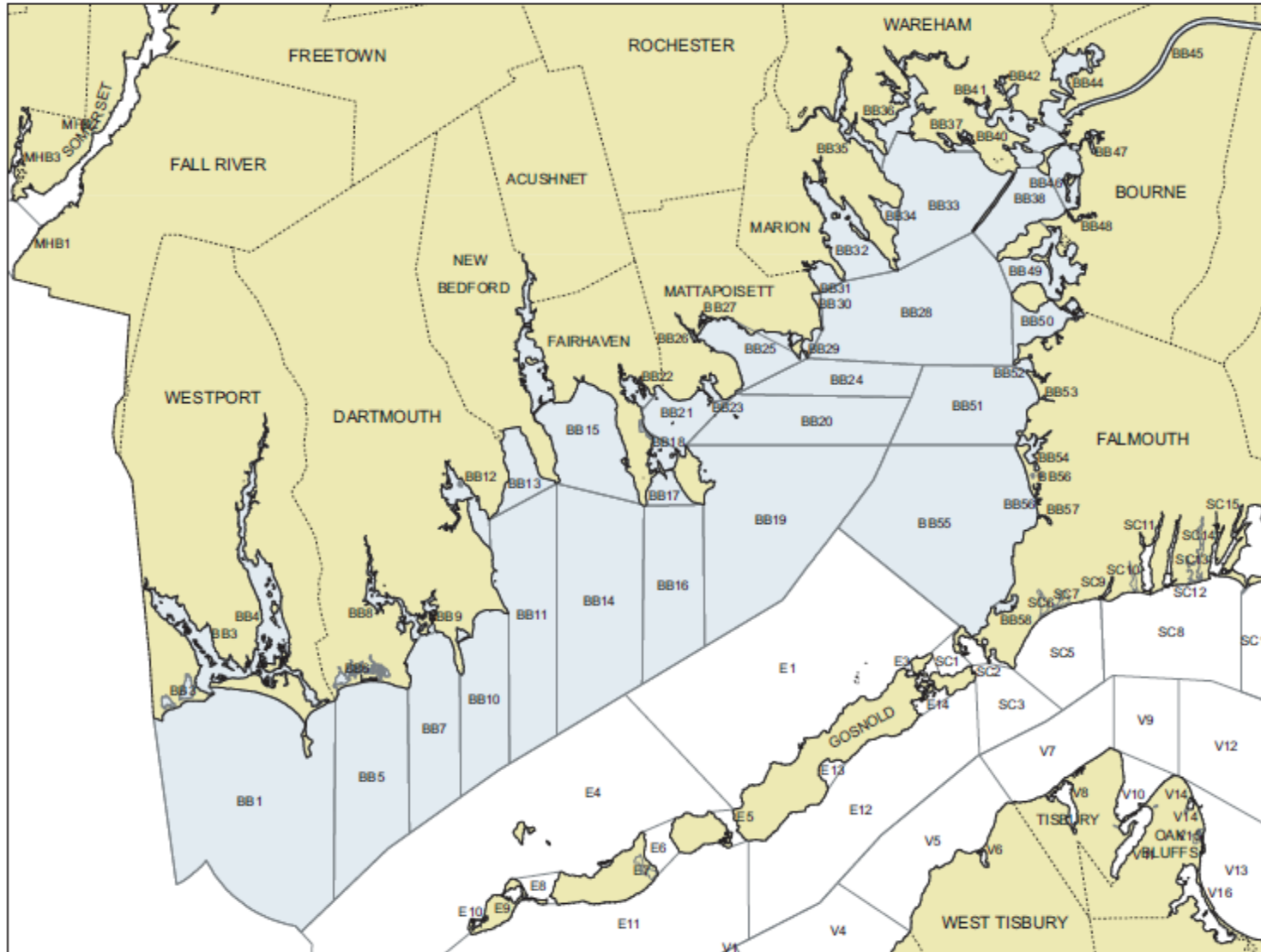




Massachusetts Division of Marine Fisheries - Designated Shellfish Growing Areas

Growing Area Code BB - Buzzards Bay



----- Town Boundary
 □ Growing Area Boundary

- 001 WESTPORT SOUTH COASTAL
- 002 RICHMOND POND
- 003 WEST BRANCH WESTPORT RIVER
- 004 EAST BRANCH WESTPORT RIVER
- 005 LITTLE BEACH COASTAL
- 006 ALDINE POND
- 007 DARTMOUTH CENTER COASTAL
- 008 SLOCUMS RIVER
- 009 LITTLE RIVER
- 010 SMITH NECK SOUTH COASTAL
- 011 DARTMOUTH EAST COASTAL
- 012 APRONAGANSETT BAY
- 013 CLARK COVE
- 014 NEW BEDFORD EAST COASTAL
- 015 NEW BEDFORD/FAIRHAVEN HARBOR
- 016 FAIRHAVEN SOUTH COASTAL
- 017 WEST ISLAND SOUTH
- 018 WEST ISLAND NORTH
- 019 WEST ISLAND EAST COASTAL
- 020 FAIRHAVEN EAST COASTAL
- 021 NARSETUOSETT BAY
- 022 LITTLE BAY
- 023 BRANDT ISLAND COVE
- 024 MATTAPOISETT SOUTH COASTAL
- 025 MATTAPOISETT HARBOR
- 026 MATTAPOISETT RIVER
- 027 DEL POND
- 028 NORTH UZZARDS BAY
- 029 POINT CONNETT
- 030 HILLER COVE
- 031 AUDDOT COVE
- 032 SPICAN HARBOR
- 033 STONY POINT COVE
- 034 WINGS COVE
- 035 WEAANTIC RIVER
- 036 WARHAM RIVER
- 037 LITTLE HARBOR/BOURNE COVE
- 038 WINGS NECK NORTH
- 039 WIDOW COVE
- 040 ONSETT BAY
- 041 SUNSET COVE
- 042 EAST RIVER SYSTEM
- 043 FISHERMAN COVE
- 044 BUTTERBECK BAY
- 045 CAPE COD CANAL
- 046 PHINNEYS HARBOR
- 047 BACKRIVER REEL POND
- 048 POCASETT RIVER
- 049 POCASETT AND RED BROOK HARBORS
- 050 MEGANSETT HARBOR
- 051 NORTH FALMOUTH/OUTER HARBOR
- 052 WILD HARBOR/WILD HARBOR RIVER
- 053 HERRING BROOK
- 054 WEST FALMOUTH HARBOR
- 055 FALMOUTH WEST COASTAL
- 056 GREAT SP PRINGSSETT MARSH
- 057 LITTLE SUPPISSETT MARSH
- 058 OUSSETT HARBOR



Produced: August 10, 2005

Shellfish Classifications of Buzzards Bay

- APPROVED- Open Year Round under all Conditions
- CONDITIONALLY APPROVED- Open under Predictable Conditions
 - > Marinas, Rainfall, Seasonal
- RESTRICTED- Open to Transplants Only
- PROHIBITED- NO SHELLFISHING ALLOWED



Massachusetts
Division of Marine Fisheries
 SHELLFISH SANITATION AND MANAGEMENT

Growing Area Code: BB36

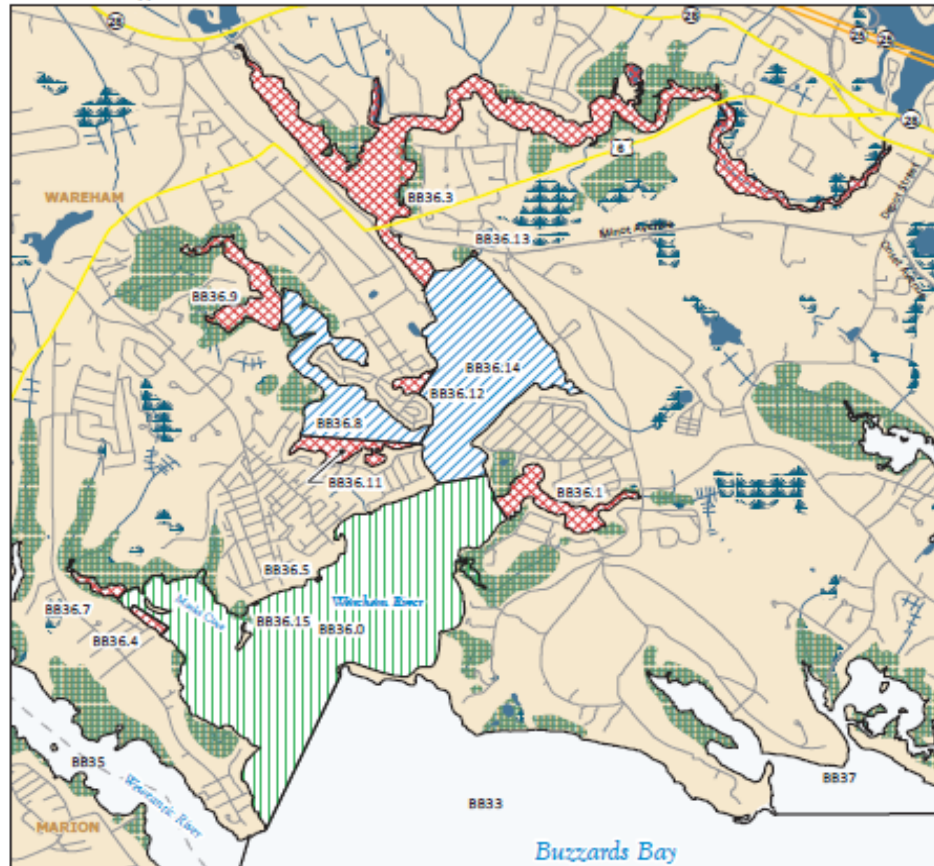
Area Name: WAREHAM RIVER

Area Town(s): Wareham

Shellfish Area Classification

| | | | |
|--|------------------------|--|--------------------------|
| | Approved | | Conditionally Restricted |
| | Conditionally Approved | | Prohibited |
| | Restricted | | |

Produced: 6/28/2013



This map depicts the Marine Fisheries' sanitary classification of shellfish growing waters in accordance with the National Shellfish Sanitation Program. It does not indicate the current status, either "open" or "closed" to harvesting due to shellfish management or public health reasons. Always confirm the status with local authorities and/or Marine Fisheries. Information on this map may be out-dated or otherwise incorrect, and should not be relied upon for legal purposes.

Marsh/Wetland Saltmarsh Pond/Lake/Reservoir
 --- Town Boundaries Stream/Ditch/Canal





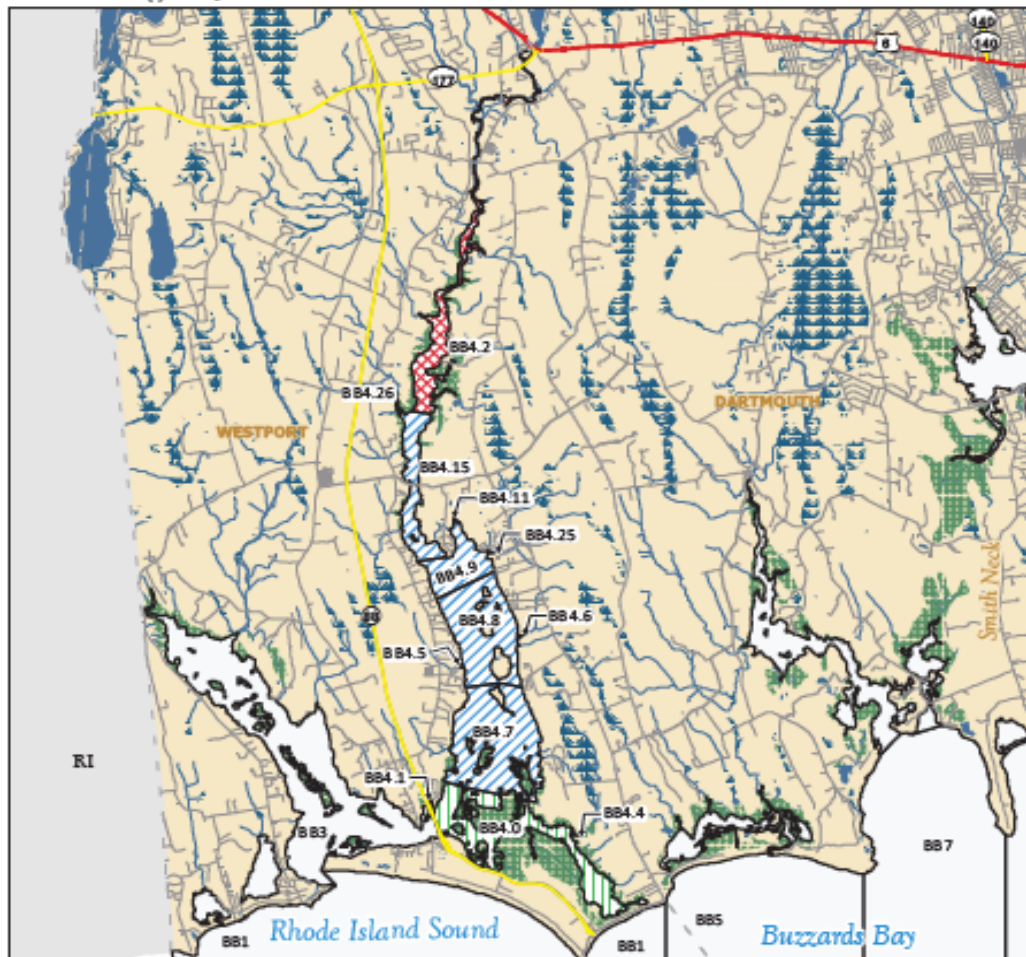
Massachusetts
Division of Marine Fisheries
SHELLFISH SANITATION AND MANAGEMENT

Growing Area Code: BB4
 Area Name: EAST BRANCH WESTPORT RIVER
 Area Town(s): Westport

Shellfish Area Classification

| | | | |
|--|------------------------|--|--------------------------|
| | Approved | | Conditionally Restricted |
| | Conditionally Approved | | Prohibited |
| | Restricted | | |

Produced: 1/31/2014



This map depicts the Marine Fisheries' sanitary classification of shellfish growing waters in accordance with the National Shellfish Sanitation Program. It does not indicate the current status, either "open" or "closed" to harvesting due to shellfish management or public health measures. Always confirm the status with local authorities and/or Marine Fisheries. Information on this map may be out-dated or otherwise incorrect, and should not be relied upon for legal purposes.

Marsh/Wetland Saltmarsh Pond/Lake/Reservoir
 - - - Town Boundaries Stream/Ditch/Canal



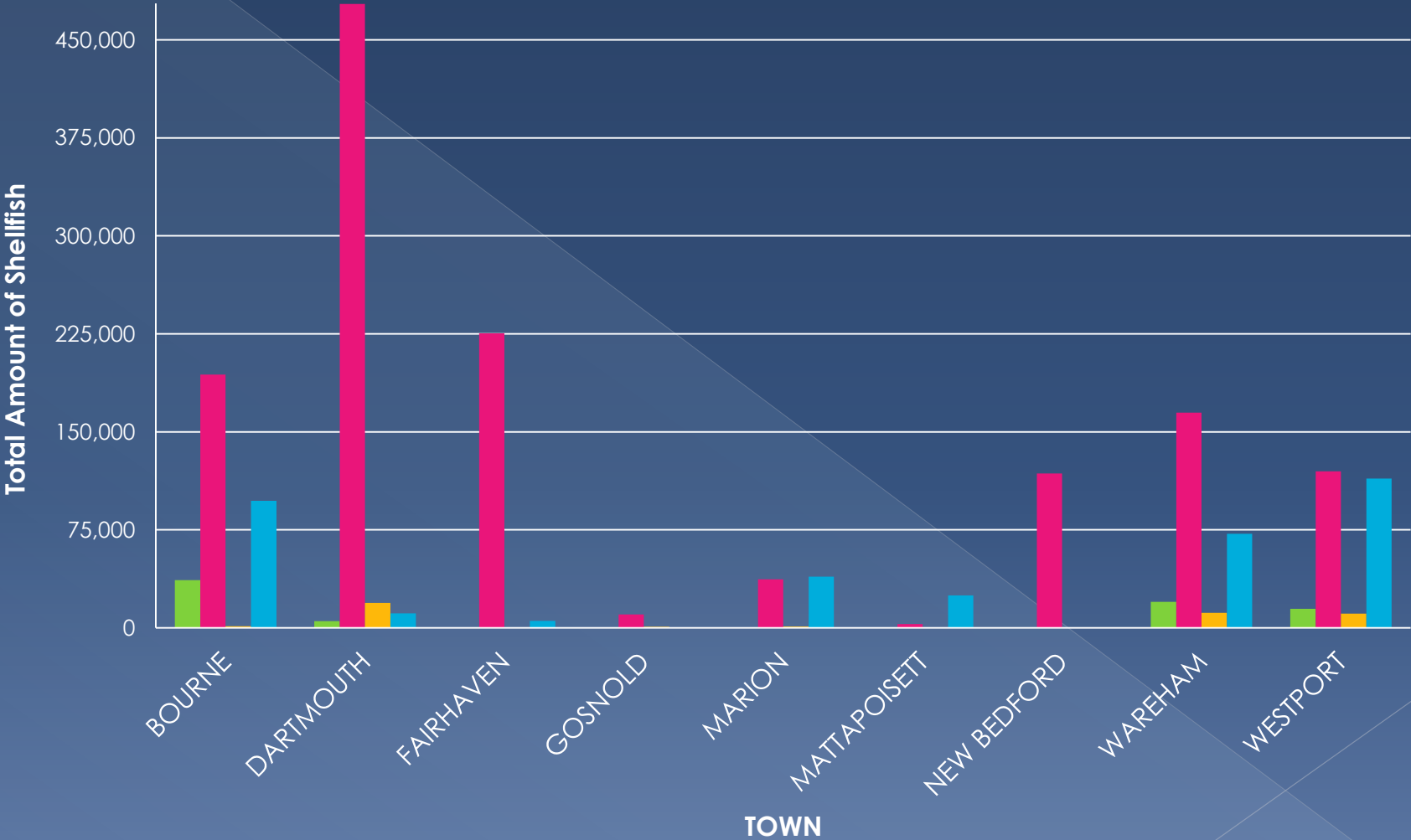




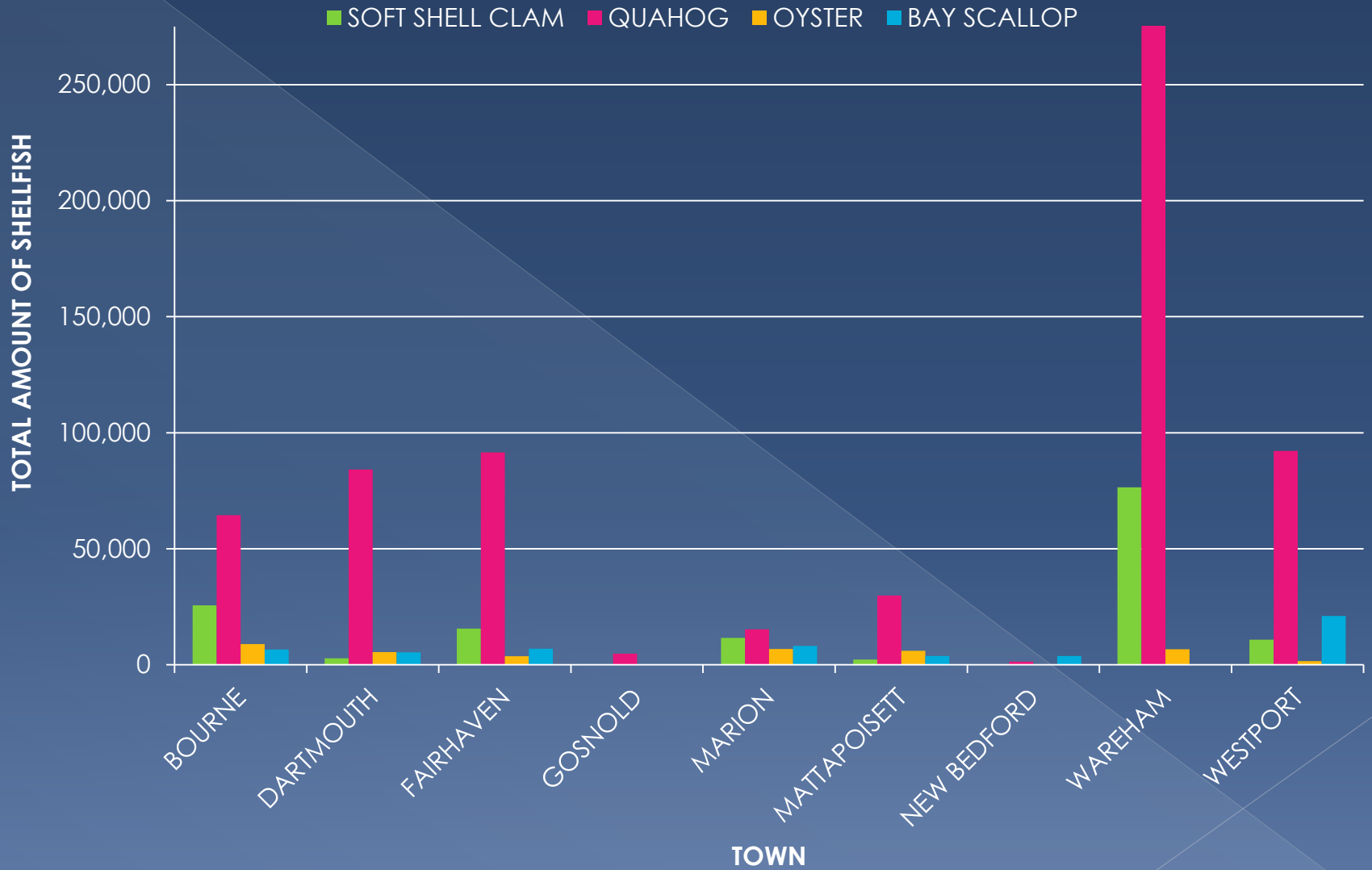


Commercial Shellfish Catch Report Totals (1970-2012)

SOFT SHELL CLAM QUAHOG OYSTER BAY SCALLOP



Recreational Shellfish Catch Report Totals (1970-2012)



COMMERCIAL SHELLFISHING CATCH DATA IN BUSHELS (1970-2012)

| TOWN | SOFT SHELL CLAM | QUAHOG | OYSTER | BAY SCALLOP |
|--------------|-----------------|-----------|--------|-------------|
| BOURNE | 36,460 | 193,774 | 1,162 | 97,190 |
| DARTMOUTH | 5,060 | 477,496 | 19,087 | 11,161 |
| FAIRHAVEN | 0 | 225,425 | 0 | 5,339 |
| GOSNOLD | 428 | 10,192 | 920 | 0 |
| MARION | 199 | 37,134 | 1,138 | 39,175 |
| MATTAPOISETT | 40 | 2,906 | 0 | 24,906 |
| NEW BEDFORD | 0 | 118,231 | 0 | 0 |
| WAREHAM | 19,968 | 164,712 | 11,507 | 72,073 |
| WESTPORT | 14,660 | 119,804 | 10,962 | 114,221 |
| TOTALS | 76,815 | 1,349,674 | 44,776 | 364,065 |

RECREATIONAL SHELLFISHING CATCH DATA IN BUSHELS(1970-2012)

| TOWNS | SOFT SHELL CLAM | QUAHOG | OYSTER | BAY SCALLOP |
|--------------|-----------------|---------|--------|-------------|
| BOURNE | 25,555 | 64,424 | 8,940 | 6,547 |
| DARTMOUTH | 2,758 | 84,184 | 5,432 | 5,310 |
| FAIRHAVEN | 15,646 | 91,519 | 3,634 | 6,926 |
| GOSNOLD | 274 | 4,791 | 280 | 140 |
| MARION | 11,597 | 15,216 | 6,838 | 8,082 |
| MATTAPOISETT | 2,230 | 29,813 | 5,981 | 3,809 |
| NEW BEDFORD | 7 | 1,344 | 0 | 3,809 |
| WAREHAM | 76,415 | 279,547 | 6,709 | 0 |
| WESTPORT | 10,784 | 92,162 | 1,537 | 21,095 |
| TOTALS | 145,266 | 663,000 | 39,351 | 77,718 |

Division of Marine Fisheries Contaminated Shellfish Relay Program

Relaying from the Taunton River



A Hydraulic Dredge



Pressurized Jets of Water





Hauling in
the dredge

3 bushels of quahogs



Bagged and tagged



The Enforcement Officer



A Trailer full of Quahogs



Fall Harvest



Buzzard's Bay Relay Totals in Bushels (2011-2014)

| Town | 2011 | 2012 | 2013 | 2014 |
|---------------|--------------|--------------|--------------|--------------|
| Bourne | 1,439 (3) | 1,364 (4) | 1,200 (3) | 1,073 (3) |
| Fairhaven | 1,000 (1) | 800 (2) | 1,000 (1) | 330 (1) |
| Falmouth | | | 157 (1) | * |
| Mattapoisett | 250 (1) | 175 (1) | 200 (1) | |
| New Bedford | | | | 230 (1) |
| Wareham | 1,000 (4) | | 1,150 (4) | |
| Westport | 990 (1) | 2,443 (6) | 5,074 (6) | 5,215 (5) |
| Totals | 4,679 | 4,782 | 8,781 | 6,848 |

Buzzard's Bay Aquaculture Sites and Acres

| Town | # of Grants | # of Acres |
|--------------|-------------|------------|
| Bourne | 1 | 2.9 |
| Fairhaven | 1 | 1 |
| Falmouth | 5 | 17.6 |
| Gosnold | 1 | 32 |
| Marion | 3 | 1.5 |
| Mattapoisett | 2 | 139.94 |
| Wareham | 7 | 78.95 |
| Westport | 3 | 3 |

Only Harvest Shellfish From Approved Waters...

