

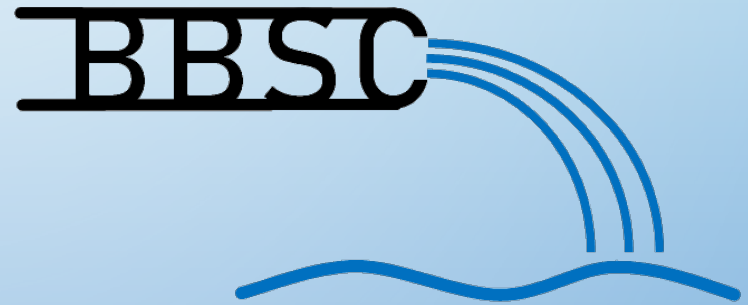
The background is a light blue gradient with several realistic water droplets of various sizes scattered across it. The droplets have highlights and shadows, giving them a three-dimensional appearance. The text is centered in the upper half of the image.

BUZZARDS BAY STORMWATER COLLABORATIVE AND MS4 UPDATE

22 APRIL 2021 – EARTH DAY

OVERVIEW

- SNEP GRANT
- DISCHARGE INVESTIGATION TRAILER
- EPA MS4 AUDITS
- REVIEW MS4 REQUIREMENTS
- TOWN CONTRACTS
- FUTURE OF COLLABORATIVE
- NEW WEBMAP



SNEP GRANT

- INITIAL MAPPING EFFORTS DONE FOR ALL EIGHT TOWNS
- WET WEATHER SAMPLING IN BOURNE – THIS SPRING
- DRY AND WET WEATHER SAMPLING IN WESTPORT – THIS SUMMER
- OUTREACH ELEMENT WILL HELP SUPPORT MS4
- GRANT IS COMING TO AN END



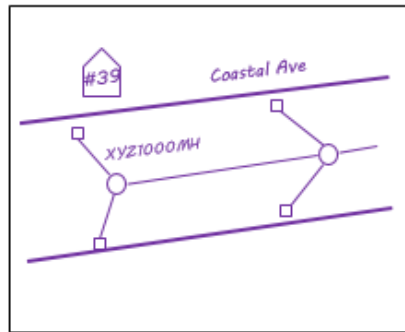
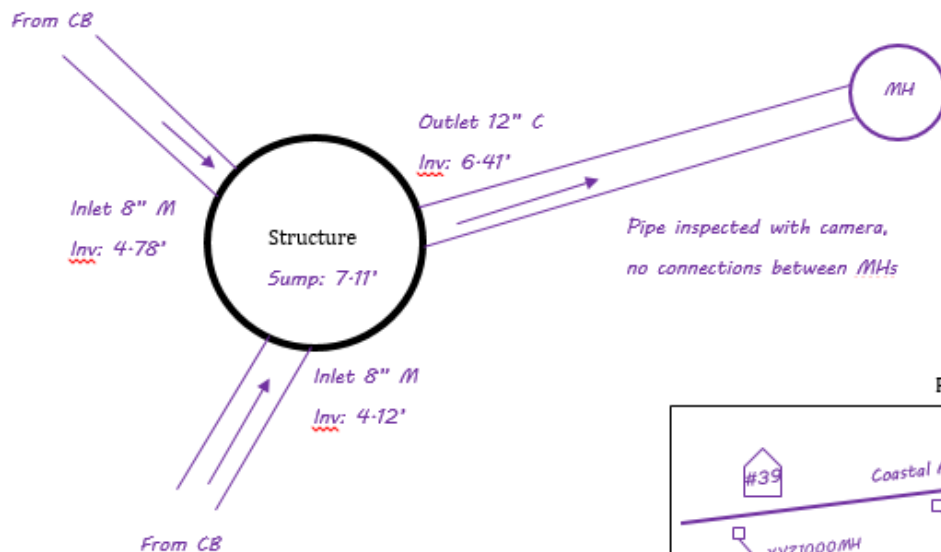
DISCHARGE INVESTIGATION TRAILER

- IDDE TRAINING IS INCORPORATED INTO THE TOWN VISITS
- MASSDEP GRANT ENDS ON JUNE 30TH - TWO TOWNS DONE
- TENTATIVE SCHEDULE (COORDINATE WITH TOWN FOR LOCATIONS):
 - MATTAPOISETT 26-30 APRIL
 - ACUSHNET 3-7 MAY
 - DARTMOUTH 10-14 MAY
 - WESTPORT 17-21 MAY
 - WAREHAM 24-28 MAY
 - BOURNE 7-11 JUNE



Facility ID:	<i>XYZ1000MH</i>	Date/Time:	<i>6/12/20 10:30AM</i>
Location:	<i>Coastal Ave near address 39</i>		
Inspector:	<i><u>KPB, MF</u></i>	Town:	<i><u>Collaborativetown</u></i>
Type:	<u>Manhole</u>	<u>Catchbasin</u>	Pipe Outfall Other:

Sketch:



Condition:	<u>Good</u>	Poor	<u>Needs Cleaning</u>	Needs Repair	Immediate Hazard
Standing Water	Obstructions/Blockages	Dry Weather Flow	Tidal Intrusion		
Trash	<u>Yard Debris</u>	Odor	Sheen	Sewage	Suds Bleaching Unnatural Color

Comments: *Adjacent catchbasins in good condition but could be cleaned.*



TRAILER – WHAT WE'RE FINDING

- NEW TECHNIQUES DEVELOPED – RECORD KEEPING, WATER LEAKS
- SUMP PUMP DRAINS
- PET WASTE
- DEBRIS IN CATCH BASINS
- FAIRHAVEN – ABOUT 12 CATCHMENTS COMPLETE: 3 ISSUES
- MARION – ABOUT 8 CATCHMENTS COMPLETE: 4 OPEN QUESTIONS

MS4 AUDITS

- WAREHAM – EPA SITE VISIT LAST YEAR WITH FOLLOW-UP THIS YEAR
- ACUSHNET – EPA SITE VISIT LAST YEAR
- WESTPORT – CONTRACTOR VIRTUAL VISIT THIS MARCH
- EPA PLANS TO AUDIT EVERY PERMIT WITHIN 5 YEARS
- MS4 IS HERE TO STAY, YOU NEED TO MEET REQUIREMENTS AND SHOW PROGRESS ON DEFICIENCIES



LESSONS LEARNED

- PREPARE AN INTRODUCTION TO YOUR TOWN
 - PREPARE AND SEND REQUESTED MATERIALS BEFORE AUDIT
 - UNDERSTAND SWMP AND ALL YOUR DOCUMENTS
 - KNOW THE RESPONSIBLE PARTIES FOR TASK
 - EXPECT TO EXPLAIN YOUR PROGRAM IN DETAIL
 - RECORD KEEPING IS CRITICAL
 - EMPHASIZE YOUR PROGRESS TOWARDS MEETING REQUIREMENTS
 - EXPECT TO DEMONSTRATE YOUR MAPPING
- MS4 LEAD PERSON**

PREVIOUS YEARS' MS4 REQUIREMENTS

- OUTFALL IDENTIFICATION AND LOCATION MAPPING
- INITIAL OUTFALL RANKING
- INITIAL CATCHMENTS DELINEATION
- OPEN CHANNEL CONVEYANCES MAPPING
- RECEIVING WATERS AND ASSOCIATED POLLUTANTS IDENTIFICATION
- BEGIN MAPPING CATCHBASINS, MANHOLES, AND PIPES

MS4 THIS YEAR REQUIREMENTS

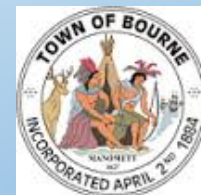
- MAPPING MS4 INTERCONNECTIONS (MADOT, UNIVERSITIES, JBCC)
- MAPPING MUNICIPAL STORMWATER TREATMENT FACILITIES
- DRY WEATHER INVENTORY
- START ILLICIT DISCHARGE INVESTIGATION AND ELIMINATION (IDDE)

MS4 REQUIREMENTS COMING SOON

- CONTINUE MAPPING ALL STRUCTURES
- CONTINUE IDDE
- UPDATE CATCHMENT DELINEATIONS
- UPDATE OUTFALL RANKINGS BASED ON IDDE AND SAMPLING
- WET WEATHER SAMPLING
- IDENTIFY CATCHMENTS FOR REMEDIATION BASED ON IDDE

TOWN CONTRACTS

- COORDINATION WITH TOWN CONTRACTORS
- FAIRHAVEN – 2020 COMPLETE
- MARION – 2020/21, PROGRESSING
- BOURNE – 2021, PROGRESSING
- WESTPORT – 2021, PROGRESSING
- CONTRACTS TO BE COMPLETE BY 30 JUNE
- VALUE ADDED BY BBNEP
- THESE FOUR TOWNS APPEAR TO BE FURTHER ALONG WITH MEETING MS4 REQUIREMENTS



FUTURE OF THE COLLABORATIVE

- COST PER UNIT AT MMA:

Staff (Maura)	50 hours	\$2050
Coop Students	60 hours	\$1800
Indirect	26%	\$1001
TOTAL	Cost per UNIT	\$4851

38.4 UNITS NEEDED TO KEEP MAURA EMPLOYED FOR AN ENTIRE YEAR

- NEEDED CONTRACTS PER YEAR: (DEPENDS ON PARTICIPATION)

Participation	Units per Town	Cost per Town	Units per Town	Cost per Town
Six Towns	6.4	\$31,046	4.8	\$23,285
Seven Towns	5.5	\$26,611	4.1	\$19,920
Eight Towns	4.8	\$23,285	3.6	\$17,430

With
\$25,000
Grant
Subsidy

THE STORMWATER WEB MAP

- TOO DIFFICULT TO USE PAPER MAPS FOR ALL THE REQUIRED ELEMENTS
- NEW WEB BASED MAP HOSTED BY MMA AND MAINTAINED BY BBNEP
- WATERSHED WIDE BUT FEATURES MORE DETAILS FOR THE EIGHT COLLABORATIVE TOWNS

[HTTPS://MASSMARITIME.MAPS.ARCGIS.COM/APPS/WEBAPPVIEWER/INDEX.HTML?ID=EE16AA4641CF490DBA88636DC7809F61](https://massmaritime.maps.arcgis.com/apps/webappviewer/index.html?id=ee16aa4641cf490dba88636dc7809f61)